
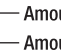




#0 DIPSY DIVER® DEPTH CHART

The amount of line needed to reach a desired depth is shown under each base plate setting.


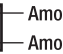
-  Amount of line needed without "0" ring
-  Amount of line needed with "0" ring

DESIRED DEPTH	SIZE 0 78g	BASE PLATE SETTING			
		0	1	2	3
		AMOUNT OF "LINE OUT", IN FEET, TO REACH DESIRED TROLLING DEPTH			
10'		21	24	33	43
		18	21	27	34
15'		35	44	54	69
		30	38	45	55
20'		54	69	84	107
		47	60	70	85
25'		81	97	120	148
		70	84	100	118
30'		115	138	168	196
		100	120	140	157
35'		167	196	234	275
		145	170	195	220
40'		276	240		

Note: there is not a depth chart available for the Dipsy Diver 3/0 (78g) size.

#1 DIPSY DIVER® DEPTH CHART

The amount of line needed to reach a desired depth is shown under each base plate setting.

-  Amount of line needed without "0" ring
-  Amount of line needed with "0" ring

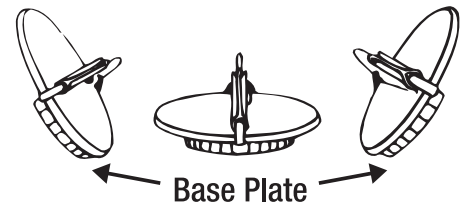
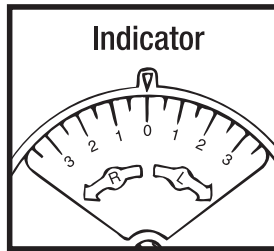
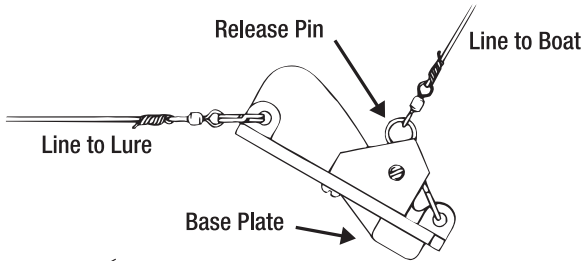
DESIRED DEPTH	SIZE 1 146g	BASE PLATE SETTING			
		0	1	2	3
		AMOUNT OF "LINE OUT", IN FEET, TO REACH DESIRED TROLLING DEPTH.			
10'		16	20	24	30
		14	17	20	24
15'		21	25	30	35
		18	22	25	28
20'		31	35	41	50
		27	30	34	40
25'		39	46	55	67
		34	40	46	53
30'		50	58	69	84
		43	50	57	67
35'		63	73	88	106
		55	63	73	85
40'		74	88	105	129
		64	76	87	103
45'		89	104	144	150
		77	90	102	120
50'		106	123	147	178
		92	107	122	142
60'		138	168		
		120	140		
70'		175	150		

#3 MAGNUM DIPSY DIVER® DEPTH CHART

The amount of line needed to reach a desired depth is shown under each base plate setting using 20# monofilament line. Depths achieved are without using "0" ring.

DESIRED DEPTH	SIZE 3 258g	BASE PLATE SETTING			
		0	1	2	3
		AMOUNT OF "LINE OUT", IN FEET, TO REACH DESIRED TROLLING DEPTH			
20'		25	27	30	32
30'		40	48	55	60
40'		56	68	80	85
50'		80	88	95	110
60'		100	110	120	140
80'		140	155	175	195
100'		180	195	220	250

Depth chart readings are based on troll speed of 2.5 to 3.0 MPH using 20-lb. mono. Trolling depth achieved will increase or decrease by 10% for each one MPH faster or slower. Line diameter and lure or attractor drag can also affect depth reached. The *Dipsy Diver* will reach greater depths when used with wire line or line that has a smaller diameter, such as any super braid, etc.



Simply snap a Dipsy Diver "0" Ring onto its matching size Dipsy Diver to increase the surface space, providing faster diving depths and allowing the Dipsy Diver to be trolled closer to the boat.



www.luhrjensen.com

© 2012 Rapala VMC Corporation