

LAKE MIDWAY

Part 1

— LARRY'S SHORT STORIES #295 —

A lake is a farm ditch with a dam, to back up water; the water being deeper at the dam end and shallow everywhere else. But, if you wanted something bigger, wherein kids could learn to fish, what would it be? For a 38-acre lake, you are going to need a civil engineer to make sure the dam is in the right place and the lake will hold water. You might want a boat ramp and parking lot and an access road.

How about minnow ponds at every major water entry point—there are 11 such places. A simple dam for each created small minnow ponds and a valve allows the water/minnows to be released into the big lake each

November. Now, dig out the lakebed, so that the

water level is 5-foot deep from every fishing spot. Add some dirt terraces at 50' and 150' to change the depth of the water—for the fish, and the kids.

So where do

you fish? For the kids, here are 92 hedge posts (protruding just above the water) installed in the first dirt terrace, at 50' from the bank—and more at 150'. In most instances one would cast to the nearest post. Then there are the rock piles—broken up concrete strategically placed around the hedge posts and other places we want to attract fish, 700 loads of rock. Plus, we left the tree trunks that didn't



The best place to put a 38-acre lake often requires a lot of tree and dirt removal. Lake Midway was no exception. (Google image 2025)

have to be removed. Since we expect to catch a lot of fish, a road connecting every fishing spot makes access easy.

An aerator keeps the water from turning over, a well keeps the water level constant, a picnic shelter

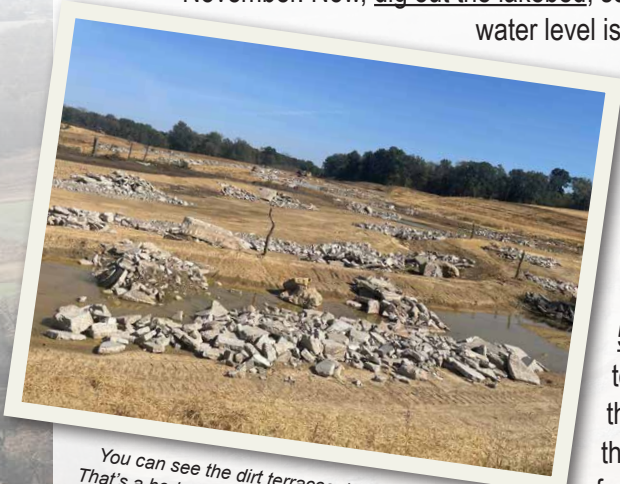
houses the waiting guests, and a fish cleaning station.

Now, we are ready for it to start raining, then the first bait fish.

“A lake is a farm ditch with a dam, to back up water...”

USA
Midway

Larry Potterfield
Midway Farms, Inc.
Northeast Corner
2024



You can see the dirt terraces, between the loads of rock. That's a hedge post you see in the middle. The top will just stick out of the water, when full, and represents the best place to catch fish.



There are 11 minnow ponds just above the lake, wherever water would run in.